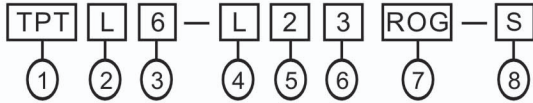


FEATURES

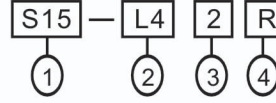
- Tend tower light can be installed in any machine as a status indicator by showing the color change of light and audible alarm. Tower light can be customer-made to meet different needs.
- Internal spring suspension can avoid damage to the bulb due to machine's vibration.
- Flexible wiring design: Steady, flashing of alarm are achievable through wiring by end user.
- Both bulb base for Incandescent bulb & LED is BA15S. So it is easy to change bulb type.
- Audio alarm buzzes at 90DB/30cm.

Model Designation



Item	Signal	Description
1. Mounting Method	TPT	Pole Mount
	TPW	Tray Mount
	TPF	Tented Type
	TPA	Side Hitch Type
2. Functional	L	Continuous light
	F	Continuous or flashing light
	S	Continuous of flashing light with audible alarm
	B	Audible alarm light
3. Diameter	4	∅ 40mm (NO TPFL)
	5	∅ 50mm
	6	∅ 60mm
	7	∅ 70mm
4. Bulb	Space	Incandescent
	L	LED
5. Voltage	1	110VAC
	2	220VAC
	7	24VAC/DC
	9	12VAC/DC
6. Section	1~5	1~5
7. Lens	R	Red
	O	Orange
	G	Green
	B	Blue
	W	White
8. Aluminum Tube Length	Space	Standard Length, TPT:288mm, TPF:43mm
	S	Special Length, TPT:138mm Special Length, TPF:193mm

Bulb Model Designation

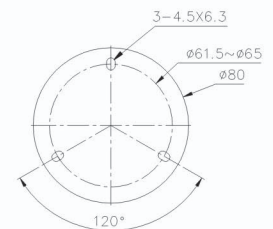
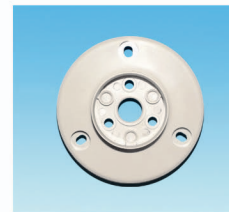


Item	Signal	Description
1. Base Type	S15	BA15S Bulb
2. Lens Diameter	I4	∅ 40mm, 5W Incandescent
	I5	∅ 50mm, 8W Incandescent
	I6	∅ 60mm/∅ 70mm, 10W Incandescent
	L4	∅ 40mm, LED
3. Voltage	L5	∅ 50mm/∅ 60mm/∅ 70mm, LED
	1	110VAC
	2	220VAC
	7	24VAC/DC
4. Color	9	12VAC/DC
	Space	Incandescent
	R	Red
	O	Orange
4. Color	G	Green LED
	B	Blue
	W	White

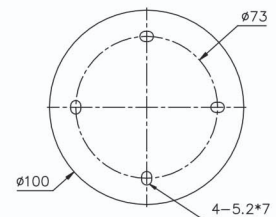
Mounting Holes

- Tray Mount

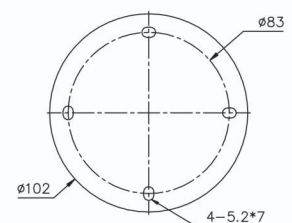
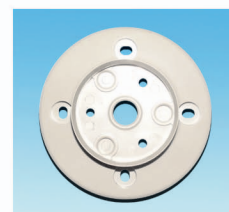
TPW □4/TPW □5



TPW □6



TPW □7



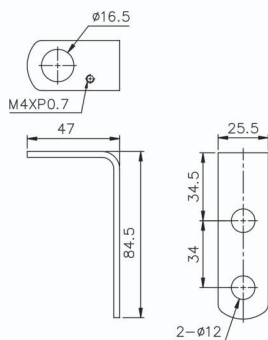
Rated current for Bulbs and Buzzers (Reference Only)

Incandescent		LED			
S15-I49(12VAC/DC)	0.5A	S15-L49(12VAC/DC)	0.1A		
S15-I47(24VAC/DC)	0.25A	S15-L47(24VAC/DC)	0.03A		
S15-I41(110VAC)	0.05A	S15-L41(110VAC)	0.02A		
S15-I42(220VAC)	0.03A	S15-L42(220VAC)	0.02A		
S15-I59(12VAC/DC)	0.7A	S15-L59(12VAC/DC)	0.15A		
S15-I57(24VAC/DC)	0.35A	S15-L57(24VAC/DC)	0.04A		
S15-I51(110VAC)	0.06A	S15-L51(110VAC)	0.02A		
S15-I52(220VAC)	0.03A	S15-L52(220VAC)	0.02A		
S15-I69(12VAC/DC)	0.8A	Buzzer			
S15-I67(24VAC/DC)	0.4A			12V AC/DC	0.08A
S15-I61(110VAC)	0.08A			24V AC/DC	0.02A
S15-I62(220VAC)	0.04A			110V AC	0.01A
		220V AC	0.01A		

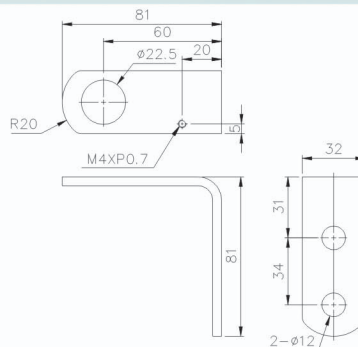
■ MOUNTING HOLES

- POLE MOUNTING BRACKET

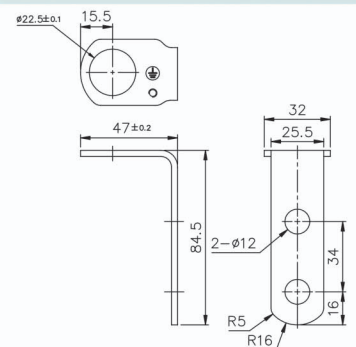
Used TPTL4



Used TPT□ 6/TPT□ 7



Used TPTF4/TPTS4/TPTB4
TPT□ 5

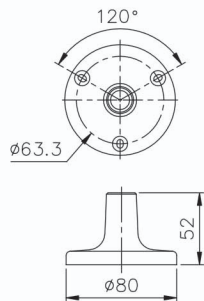


■ MOUNTING HOLES

- POLE MOUNTING BRACKET(OPTIONAL)

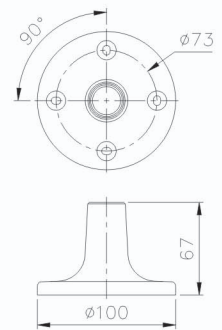
TPTL-S

Used TPTL4



TPTL6-S

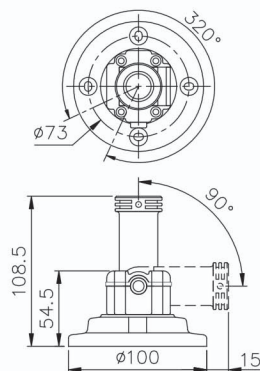
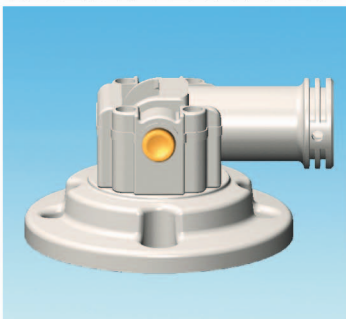
Used TPTS4/TPTF4/TPTB4
TPT□ 5/TPT□ 6/TPT□ 7



- FOLDABLE MOUNTING BRACKET(OPTIONAL)

TPTL6-F

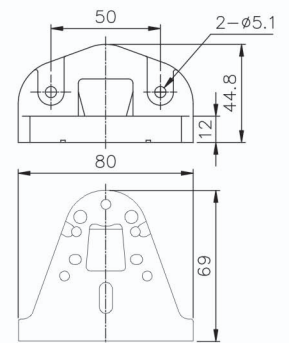
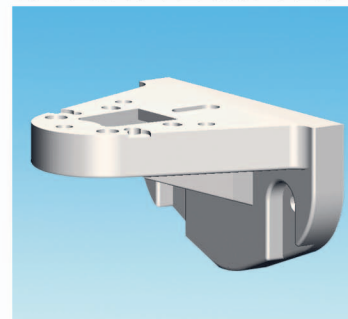
Used TPTS4/TPTF4/TPTB4
TPT□ 5/TPT□ 6/TPT□ 7



- SIDE MOUNTING BRACKET(OPTIONAL)

TPTL6-A

Used TPT□ 4
TPT□ 5/TPT□ 6/TPT□ 7



■ TPTL4/TPAL4



■ TP□F4/TP□S4/TP□B4



■ TPWL4



■ TPWF4/TPWS4/TPWB4



■ TPTL5/TPAL5/TPFL5



■ TP□F5/TP□S5/TP□B5



■ TPWL5



■ TPWF5/TPWS5/TPWB5



■ TPTL6/TPAL6/TPFL6



■ TP□F6/TP□S6/TP□B6



■ TPWL6



■ TPWF6/TPWS6/TPWB6



■ TPTL7/TPAL7/TPTF7



■ TP□F7/TP□S7/TP□B7



■ TPWL7



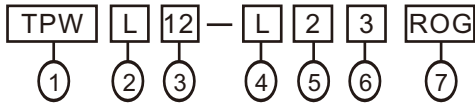
■ TPWF7/TPWS7/TPWB7



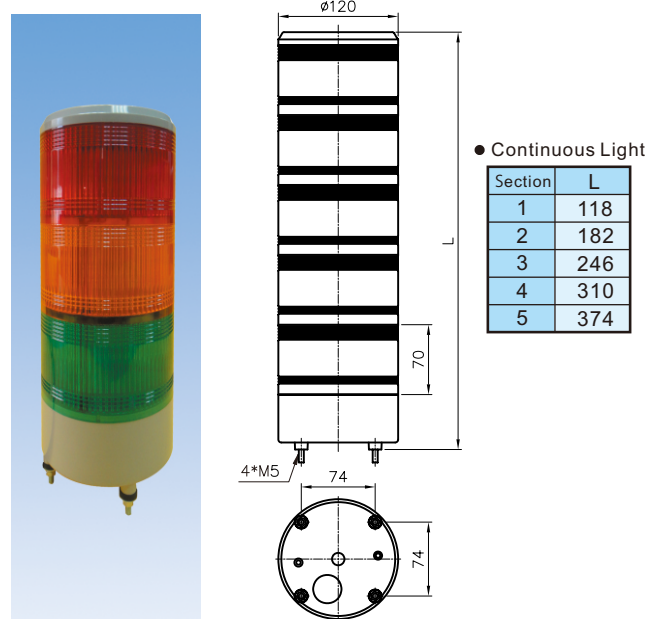
FEATURES

- Tend tower light can be installed in any machine as a status indicator by showing the color change of light and audible alarm. Tower light can be custom-made to meet different needs.
- Flexible wiring design. LED flashing or continuous and Alarm intermittent or continuous can be determined by end user through wiring.
- Audio alarm buzzes at 90DB/30cm.

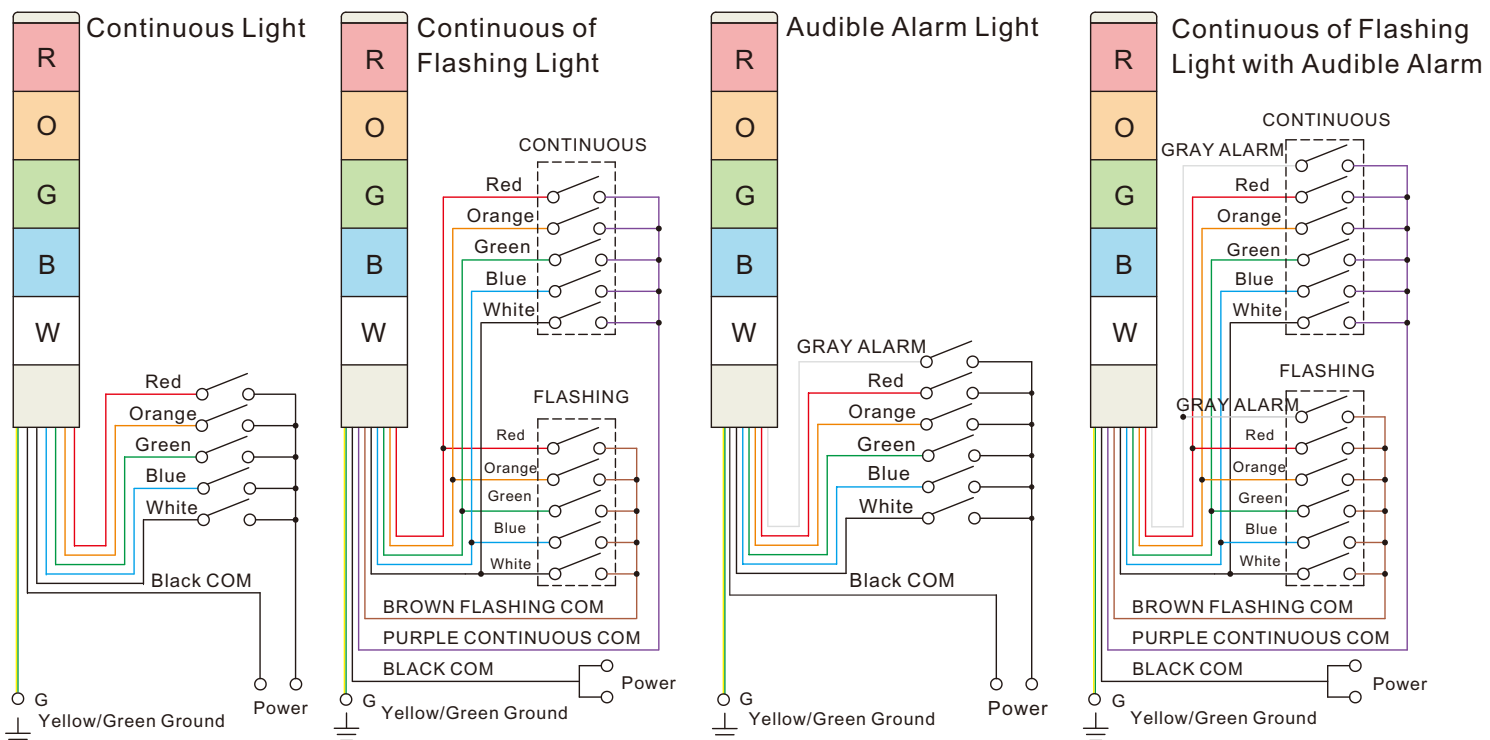
Model Designation



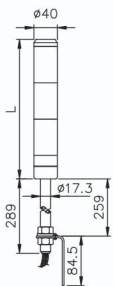
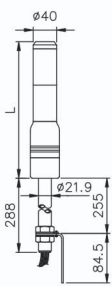
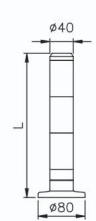
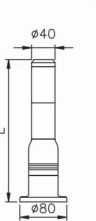
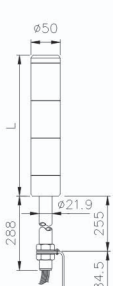
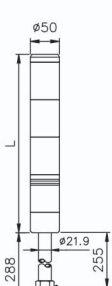
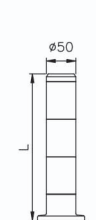
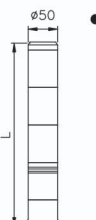
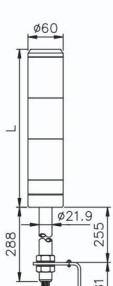
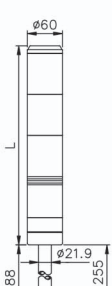
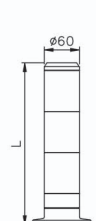
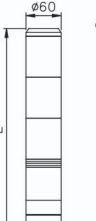
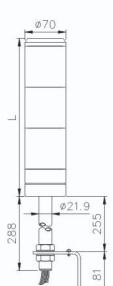
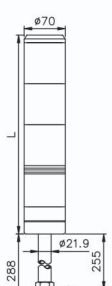
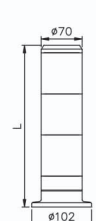

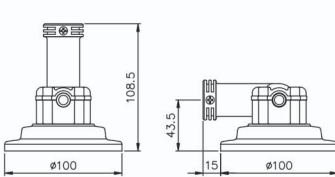
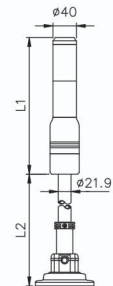
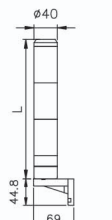
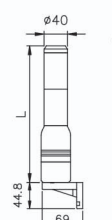
Item	Code	Description
1. Mounting Method	TPW	Tray Mount
2. Function	L	Continuous Light
	F	Continuous Flashing Light
	S	Continuous Flashing Light with Audible Alarm
	B	Audible Alarm Light
3. Diameter	12	Ø120mm
4. Bulb	L	LED
5. Voltage	1	110VAC
	2	220VAC
	7	24VAC/DC
	9	12VAC/DC
6. Section	1~5	1~5
7. Lens Color	R	Red
	O	Orange
	G	Green
	B	Blue
	W	White



WIRING DIAGRAM (DC, Polarity labeled on power cables.)



DIMENSIONS

 <p>• TPTL4:</p> <table border="1" data-bbox="263 305 414 480"> <thead> <tr> <th>SECTION</th> <th>L</th> </tr> </thead> <tbody> <tr><td>1</td><td>114</td></tr> <tr><td>2</td><td>176</td></tr> <tr><td>3</td><td>238</td></tr> <tr><td>4</td><td>300</td></tr> <tr><td>5</td><td>362</td></tr> </tbody> </table>	SECTION	L	1	114	2	176	3	238	4	300	5	362	 <p>• TPTF4/TPFS4 TPTB4:</p> <table border="1" data-bbox="598 305 750 480"> <thead> <tr> <th>SECTION</th> <th>L</th> </tr> </thead> <tbody> <tr><td>1</td><td>171</td></tr> <tr><td>2</td><td>233</td></tr> <tr><td>3</td><td>295</td></tr> <tr><td>4</td><td>357</td></tr> <tr><td>5</td><td>419</td></tr> </tbody> </table>	SECTION	L	1	171	2	233	3	295	4	357	5	419	 <p>• TPWL4:</p> <table border="1" data-bbox="965 305 1117 480"> <thead> <tr> <th>SECTION</th> <th>L</th> </tr> </thead> <tbody> <tr><td>1</td><td>122</td></tr> <tr><td>2</td><td>184</td></tr> <tr><td>3</td><td>246</td></tr> <tr><td>4</td><td>308</td></tr> <tr><td>5</td><td>370</td></tr> </tbody> </table>	SECTION	L	1	122	2	184	3	246	4	308	5	370	 <p>• TPWF4/TPWS4 TPWB4:</p> <table border="1" data-bbox="1300 305 1452 480"> <thead> <tr> <th>SECTION</th> <th>L</th> </tr> </thead> <tbody> <tr><td>1</td><td>181</td></tr> <tr><td>2</td><td>243</td></tr> <tr><td>3</td><td>305</td></tr> <tr><td>4</td><td>367</td></tr> <tr><td>5</td><td>429</td></tr> </tbody> </table>	SECTION	L	1	181	2	243	3	305	4	367	5	429
SECTION	L																																																		
1	114																																																		
2	176																																																		
3	238																																																		
4	300																																																		
5	362																																																		
SECTION	L																																																		
1	171																																																		
2	233																																																		
3	295																																																		
4	357																																																		
5	419																																																		
SECTION	L																																																		
1	122																																																		
2	184																																																		
3	246																																																		
4	308																																																		
5	370																																																		
SECTION	L																																																		
1	181																																																		
2	243																																																		
3	305																																																		
4	367																																																		
5	429																																																		
 <p>• TPTL5:</p> <table border="1" data-bbox="263 655 414 829"> <thead> <tr> <th>SECTION</th> <th>L</th> </tr> </thead> <tbody> <tr><td>1</td><td>112</td></tr> <tr><td>2</td><td>176</td></tr> <tr><td>3</td><td>240</td></tr> <tr><td>4</td><td>304</td></tr> <tr><td>5</td><td>368</td></tr> </tbody> </table>	SECTION	L	1	112	2	176	3	240	4	304	5	368	 <p>• TPTF5/TPFS5 TPTB5:</p> <table border="1" data-bbox="598 655 750 829"> <thead> <tr> <th>SECTION</th> <th>L</th> </tr> </thead> <tbody> <tr><td>1</td><td>176</td></tr> <tr><td>2</td><td>240</td></tr> <tr><td>3</td><td>304</td></tr> <tr><td>4</td><td>368</td></tr> <tr><td>5</td><td>432</td></tr> </tbody> </table>	SECTION	L	1	176	2	240	3	304	4	368	5	432	 <p>• TPWL5:</p> <table border="1" data-bbox="965 655 1117 829"> <thead> <tr> <th>SECTION</th> <th>L</th> </tr> </thead> <tbody> <tr><td>1</td><td>122</td></tr> <tr><td>2</td><td>186</td></tr> <tr><td>3</td><td>250</td></tr> <tr><td>4</td><td>314</td></tr> <tr><td>5</td><td>378</td></tr> </tbody> </table>	SECTION	L	1	122	2	186	3	250	4	314	5	378	 <p>• TPWF5/TPWS5 TPWB5:</p> <table border="1" data-bbox="1300 655 1452 829"> <thead> <tr> <th>SECTION</th> <th>L</th> </tr> </thead> <tbody> <tr><td>1</td><td>186</td></tr> <tr><td>2</td><td>250</td></tr> <tr><td>3</td><td>314</td></tr> <tr><td>4</td><td>378</td></tr> <tr><td>5</td><td>442</td></tr> </tbody> </table>	SECTION	L	1	186	2	250	3	314	4	378	5	442
SECTION	L																																																		
1	112																																																		
2	176																																																		
3	240																																																		
4	304																																																		
5	368																																																		
SECTION	L																																																		
1	176																																																		
2	240																																																		
3	304																																																		
4	368																																																		
5	432																																																		
SECTION	L																																																		
1	122																																																		
2	186																																																		
3	250																																																		
4	314																																																		
5	378																																																		
SECTION	L																																																		
1	186																																																		
2	250																																																		
3	314																																																		
4	378																																																		
5	442																																																		
 <p>• TPTL6:</p> <table border="1" data-bbox="263 1026 414 1201"> <thead> <tr> <th>SECTION</th> <th>L</th> </tr> </thead> <tbody> <tr><td>1</td><td>130</td></tr> <tr><td>2</td><td>200</td></tr> <tr><td>3</td><td>270</td></tr> <tr><td>4</td><td>340</td></tr> <tr><td>5</td><td>410</td></tr> </tbody> </table>	SECTION	L	1	130	2	200	3	270	4	340	5	410	 <p>• TPTF6/TPFS6 TPTB6:</p> <table border="1" data-bbox="598 1026 750 1201"> <thead> <tr> <th>SECTION</th> <th>L</th> </tr> </thead> <tbody> <tr><td>1</td><td>200</td></tr> <tr><td>2</td><td>270</td></tr> <tr><td>3</td><td>340</td></tr> <tr><td>4</td><td>410</td></tr> <tr><td>5</td><td>480</td></tr> </tbody> </table>	SECTION	L	1	200	2	270	3	340	4	410	5	480	 <p>• TPWL6:</p> <table border="1" data-bbox="965 1026 1117 1201"> <thead> <tr> <th>SECTION</th> <th>L</th> </tr> </thead> <tbody> <tr><td>1</td><td>136</td></tr> <tr><td>2</td><td>206</td></tr> <tr><td>3</td><td>276</td></tr> <tr><td>4</td><td>346</td></tr> <tr><td>5</td><td>416</td></tr> </tbody> </table>	SECTION	L	1	136	2	206	3	276	4	346	5	416	 <p>• TPWF6/TPWS6 TPWB6:</p> <table border="1" data-bbox="1300 1026 1452 1201"> <thead> <tr> <th>SECTION</th> <th>L</th> </tr> </thead> <tbody> <tr><td>1</td><td>206</td></tr> <tr><td>2</td><td>276</td></tr> <tr><td>3</td><td>346</td></tr> <tr><td>4</td><td>416</td></tr> <tr><td>5</td><td>486</td></tr> </tbody> </table>	SECTION	L	1	206	2	276	3	346	4	416	5	486
SECTION	L																																																		
1	130																																																		
2	200																																																		
3	270																																																		
4	340																																																		
5	410																																																		
SECTION	L																																																		
1	200																																																		
2	270																																																		
3	340																																																		
4	410																																																		
5	480																																																		
SECTION	L																																																		
1	136																																																		
2	206																																																		
3	276																																																		
4	346																																																		
5	416																																																		
SECTION	L																																																		
1	206																																																		
2	276																																																		
3	346																																																		
4	416																																																		
5	486																																																		
 <p>• TPTL7:</p> <table border="1" data-bbox="263 1419 414 1594"> <thead> <tr> <th>SECTION</th> <th>L</th> </tr> </thead> <tbody> <tr><td>1</td><td>130</td></tr> <tr><td>2</td><td>200</td></tr> <tr><td>3</td><td>270</td></tr> <tr><td>4</td><td>340</td></tr> <tr><td>5</td><td>410</td></tr> </tbody> </table>	SECTION	L	1	130	2	200	3	270	4	340	5	410	 <p>• TPTF7/TPFS7 TPTB7:</p> <table border="1" data-bbox="598 1419 750 1594"> <thead> <tr> <th>SECTION</th> <th>L</th> </tr> </thead> <tbody> <tr><td>1</td><td>200</td></tr> <tr><td>2</td><td>270</td></tr> <tr><td>3</td><td>340</td></tr> <tr><td>4</td><td>410</td></tr> <tr><td>5</td><td>480</td></tr> </tbody> </table>	SECTION	L	1	200	2	270	3	340	4	410	5	480	 <p>• TPWL7:</p> <table border="1" data-bbox="965 1419 1117 1594"> <thead> <tr> <th>SECTION</th> <th>L</th> </tr> </thead> <tbody> <tr><td>1</td><td>136</td></tr> <tr><td>2</td><td>206</td></tr> <tr><td>3</td><td>276</td></tr> <tr><td>4</td><td>346</td></tr> <tr><td>5</td><td>416</td></tr> </tbody> </table>	SECTION	L	1	136	2	206	3	276	4	346	5	416	 <p>• TPWF7/TPWS7 TPWB7:</p> <table border="1" data-bbox="1300 1419 1452 1594"> <thead> <tr> <th>SECTION</th> <th>L</th> </tr> </thead> <tbody> <tr><td>1</td><td>206</td></tr> <tr><td>2</td><td>276</td></tr> <tr><td>3</td><td>346</td></tr> <tr><td>4</td><td>416</td></tr> <tr><td>5</td><td>486</td></tr> </tbody> </table>	SECTION	L	1	206	2	276	3	346	4	416	5	486
SECTION	L																																																		
1	130																																																		
2	200																																																		
3	270																																																		
4	340																																																		
5	410																																																		
SECTION	L																																																		
1	200																																																		
2	270																																																		
3	340																																																		
4	410																																																		
5	480																																																		
SECTION	L																																																		
1	136																																																		
2	206																																																		
3	276																																																		
4	346																																																		
5	416																																																		
SECTION	L																																																		
1	206																																																		
2	276																																																		
3	346																																																		
4	416																																																		
5	486																																																		
<p>• TPTL6-F</p> 	<p>• TPTF4/TPFS4 TPFB4:</p> <table border="1" data-bbox="582 1790 734 1965"> <thead> <tr> <th>SECTION</th> <th>L1</th> <th>L2</th> </tr> </thead> <tbody> <tr><td>1</td><td>171</td><td>Short151</td></tr> <tr><td>2</td><td>233</td><td>Long 301</td></tr> <tr><td>3</td><td>295</td><td></td></tr> <tr><td>4</td><td>357</td><td></td></tr> <tr><td>5</td><td>419</td><td></td></tr> </tbody> </table> 	SECTION	L1	L2	1	171	Short151	2	233	Long 301	3	295		4	357		5	419		<p>• TPAL4:</p> <table border="1" data-bbox="965 1790 1117 1965"> <thead> <tr> <th>SECTION</th> <th>L</th> </tr> </thead> <tbody> <tr><td>1</td><td>114</td></tr> <tr><td>2</td><td>176</td></tr> <tr><td>3</td><td>238</td></tr> <tr><td>4</td><td>300</td></tr> <tr><td>5</td><td>362</td></tr> </tbody> </table> 	SECTION	L	1	114	2	176	3	238	4	300	5	362	<p>• TPAF4/TPAS4 TPAB4:</p> <table border="1" data-bbox="1300 1790 1452 1965"> <thead> <tr> <th>SECTION</th> <th>L</th> </tr> </thead> <tbody> <tr><td>1</td><td>171</td></tr> <tr><td>2</td><td>233</td></tr> <tr><td>3</td><td>295</td></tr> <tr><td>4</td><td>357</td></tr> <tr><td>5</td><td>419</td></tr> </tbody> </table> 	SECTION	L	1	171	2	233	3	295	4	357	5	419						
SECTION	L1	L2																																																	
1	171	Short151																																																	
2	233	Long 301																																																	
3	295																																																		
4	357																																																		
5	419																																																		
SECTION	L																																																		
1	114																																																		
2	176																																																		
3	238																																																		
4	300																																																		
5	362																																																		
SECTION	L																																																		
1	171																																																		
2	233																																																		
3	295																																																		
4	357																																																		
5	419																																																		

● TPFL5:

SECTION	L1	L2
1	112	Short 151
2	176	Long 301
3	240	
4	304	
5	368	

● TPFF5/TPFS5
TPFB5:

SECTION	L1	L2
1	176	Short 151
2	240	Long 301
3	304	
4	368	
5	432	

● TPAL5:

SECTION	L
1	112
2	176
3	240
4	304
5	368

● TPAF5/TPAS5
TPAB5:

SECTION	L
1	176
2	240
3	304
4	368
5	432

● TPFL6:

SECTION	L1	L2
1	130	Short 151
2	200	Long 301
3	270	
4	340	
5	410	

● TPFF6/TPFS6
TPFB6:

SECTION	L1	L2
1	200	Short 151
2	270	Long 301
3	340	
4	410	
5	480	

● TPAL6:

SECTION	L
1	130
2	200
3	270
4	340
5	410

● TPAF6/TPAS6
TPAB6:

SECTION	L
1	200
2	270
3	340
4	410
5	480

● TPFL7:

SECTION	L1	L2
1	130	Short 151
2	200	Long 301
3	270	
4	340	
5	410	

● TPFF7/TPFS7
TPFB7:

SECTION	L1	L2
1	200	Short 151
2	270	Long 301
3	340	
4	410	
5	480	

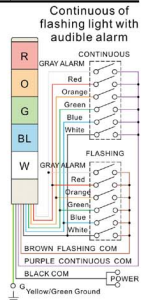
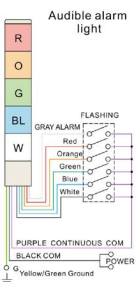
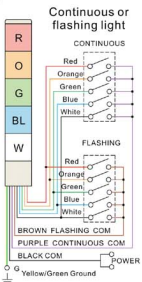
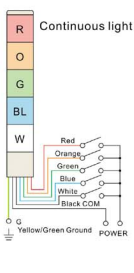
● TPAL7:

SECTION	L
1	130
2	200
3	270
4	340
5	410

● TPAF7/TPAS7
TPAB7:

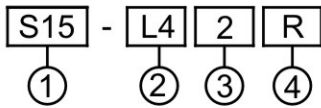
SECTION	L
1	200
2	270
3	340
4	410
5	480

WIRING DIAGRAM



LED Lamp for Tower Light

MODEL DESIGNATION



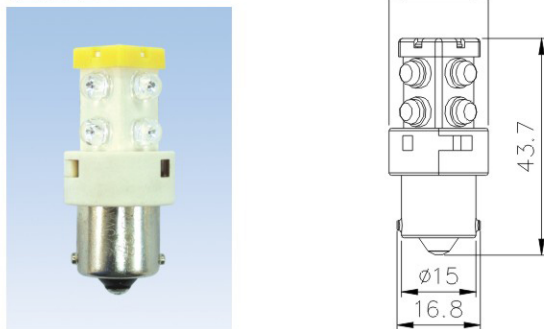
Item	Signal	Description
1.Base Type	S15	BA15S base
2.Lamp Type	L4	LED x 8
	L5	LED x 15
3.Voltage	1	110VAC / DC
	2	220VAC / DC
	7	24VAC / DC
	9	12VAC / DC

Item	Signal	Description
4.Color	R	Red LED
	O	Orange LED
	G	Green LED
	BL	Blue LED
	W	White LED

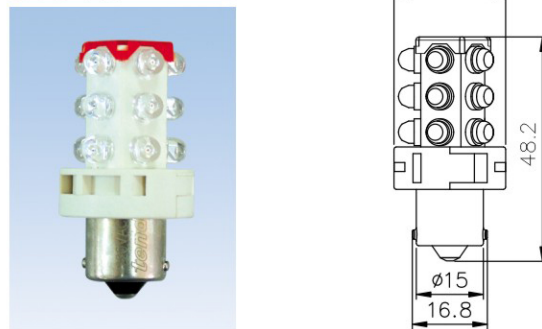
S15-L4: for Ø40 Series
 S15-L5: for Ø50.Ø60 and Ø70 Series

LAMP DIMENSION

S15-L4

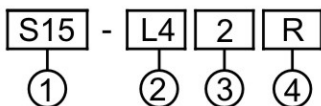


S15-L5



LED Lamp for Warning Light

MODEL DESIGNATION



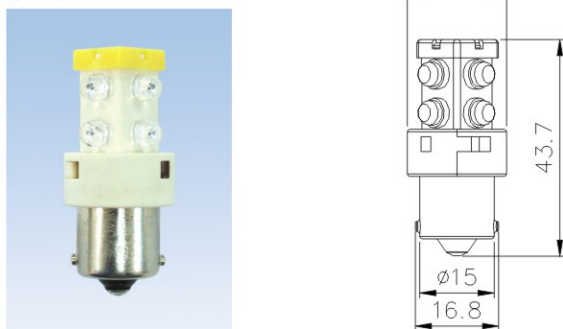
Item	Signal	Description
1.Base Type	S15	BA15S base
2.Lamp Type	L4	LED x 8
	L6	LED x 15
3.Voltage	1	110VAC / DC
	2	220VAC / DC
	7	24VAC / DC
	9	12VAC / DC

Item	Signal	Description
4.Color	R	Red LED
	O	Orange LED
	G	Green LED
	BL	Blue LED

S15-L4: for TWR-08 only
 S15-L6: for TWF-10 & TWF-12

LAMP DIMENSION

S15-L4



S15-L6

